



GameSecure is a player access tool that allows operators and regulators in the iGaming space to have real-time database access management in the area of responsible gaming and player protection.

Opportunity

Through collaboration of data, new jurisdictions have a unique opportunity to address responsible gaming in a simple, cost-effective manner, benefiting operators, regulators and players.

GameSecure reduces regulator and operator liabilities caused by barred and vulnerable players gaining access to iGaming content.

How it works

1. Platform Agnostic Integration

GameSecure's powerful Application Programming Interface integrates with any operator platform of 3rd party service provider.



2. Data Push from Operator to Regulator

Built into an operator's existing user flow, GameSecure allows operators to push player identification in "real-time" directly to a regulator's database.



3. Database Referencing

Each time a new user registers or logs in, their unique identifier is cross referenced instantly with the regulatory or GameSecure's VSE and barred patron database. If a player does exist on either database, they will not be allowed to login.

Company

Founded
August 22, 2016

Current Licenses
NJDGE Ancillary
License

Development Partners
Invoke Media

Corporate HQ
322 Water St. #400
Vancouver BC, V6B 1A7

Regulator Benefits

- Real-time reporting on players attempting access post self-exclusion
- Direct control of log in processes to shut off access to banned, barred, or self-excluded players
- Uniform user data without reliance on multiple operators

Operator Benefits

- Simple and singular access to perform barred and self-exclusion checks
- Reduce liability for enforcing self-excluded and banned players accessing content
- Decrease liability for non-compliance
- Less frequent data requests from regulators

FAQs

How does this effect the user experience?

There is zero effect on the user experience. As a user is registering or logging in, GameSecure works in the background to cross reference all regulatory databases to ensure that player should receive access to a given site.

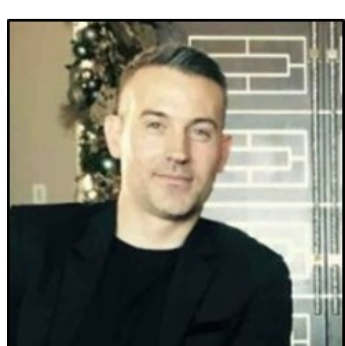
Don't regulators already have processes for managing VSE and barred patrons?

Yes, but the current infrastructure in most jurisdictions require there to be multiple transfers of information once a player has been barred or has made the decision to VSE. As a result of these multiple transfers, there is a lag between the time a players access is restricted, to when they are actually disabled across all operating sites. GameSecure ensures that once a player is placed into a single database, that player is restricted from all operating sites with no additional action needed by the regulator or operator.

How will this affect a given market?

GameSecure's goal is to never have another fine placed on an operator for allowing a player access to iGaming content once they have excluded themselves. Although fines are necessary to deter this from happening, the damage on the player has already be done. There should not be news headlines, fines, or legal battles due to a player gaining access who shouldn't.

Founding Team

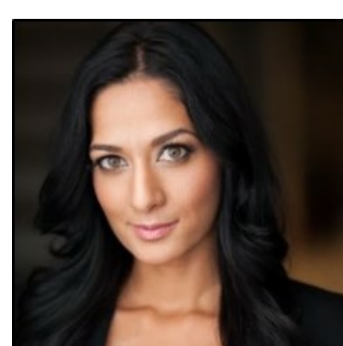


Cameron B. Conn

Founder & CEO

- 14 years of hospitality gaming industry experience in design & development and operations
- Expert in acquisition and retention strategies for the Canadian gaming market
- 30+ years family lineage in casino ownership and operations in North America

Cameron@gamesecure.ca



Yasmine Roulleau

Co-Founder & President

- Global Strategic Advisor in Healthcare, Gaming & Technologies including commercialization of data.
- Clinical understanding and business acumen in the specializing in problem gambling behaviors and corporate social responsibility strategy
- International expert in RG and PG bridging operators and regulators

Yasmine@gamesecure.ca